



Turner Contemporary

Turner and the Elements

Hamish Fulton: Walk

Exhibition and events guide

Margate
Free admission

Exhibition Sponsors

Turner Contemporary is grateful to its exhibition sponsors.

London Array

London Array is currently the world's largest consented offshore windfarm project. It is being built 20km off the Kent coast in the outer Thames Estuary. Construction on Phase One of the development is due to be complete by the end of 2012. It includes 175 turbines with a combined capacity of 630MW, generating enough energy to power around 472,500 homes. A proposed second phase would bring total capacity up to 1,000MW. The London Array could eventually power up to 750,000 homes.

London Array is being developed by a consortium with the following shareholdings: DONG Energy (50%), E.ON (30%) and Masdar (20%).



Shepherd Neame

Shepherd Neame is Britain's oldest brewer and is based in Faversham, Kent. It brews such popular ales as Spitfire and Bishops Finger as well as international lagers under licence, including Asahi and Oranjeboom. It operates an estate of more than 350 pubs, inns and hotels in the South East and is Kent's largest independent accommodation provider. The Faversham Brewery's Visitor Centre is a popular tourist destination and, together with The Old Brewery Store, Shepherd Neame can accommodate conferences and events for up to 400 people.

The company is delighted to support Turner Contemporary in its role as a key player in Kent's cultural regeneration.

Facebook.com/shepherdneame
Twitter @shepherdneame
www.shepherdneame.co.uk



What's On Exhibition Tours

Saturdays, Sundays and bank holidays 11-11.30am.
On a Tuesday every fortnight 3pm (beginning 31 January)
Free, just turn up.

Special Guest Tours

Andrew Wilton,
Chairman, Turner Society
28 February 3pm free

Guided Exploration
9 April (bank holiday Monday)
11am / 3pm

£5 / £4 concessions
Take a historical tour around Turner's Margate with local Turner enthusiast Bob Barrass and Curator of Public Programmes Sepake Angiama. Walk lasts approximately one hour. Sensible walking shoes recommended.

Stephen Turner, artist
8 May 3pm free

Artist Stephen Turner guides visitors through *Turner and the Elements*, drawing out key works that Turner painted in East Kent.

Encounter Forum

25 Jan / 8, 22 Feb / 14, 28 Mar / 11, 25 Apr / 9, 23 May 6pm

Take part in lively discussions about the work of Turner Contemporary and have your chance to participate in our future programming.

Come along to our Forum with a friend who has never been to the gallery before and get a free cup of tea/coffee at the forum. Email sangiama@turnercontemporary.org for details.

Families

Discover exciting new ways to experience and make art together at our regular family workshops: **Easy Sundays**, every week and on bank holidays; **Easy Holidays**, every Wednesday and Thursday during school holidays.

Easy Sundays

1-4pm £2 per child (adults and under 3s free), just turn up.

Natural Wonders

22 Jan / 5, 19 Feb / 4, 18 Mar / 1, 15, 29 Apr / 13 May

Draw with a difference using the power of the elements and minerals such as iron filings instead of a traditional pencil.



Photo © Benedict Johnson

Sonic Play

29 Jan / 12, 26 Feb / 11, 25 Mar / 6, 8, 9 Apr / 6, 7 May

Create your own elemental scene whilst listening to tunes composed by students from Canterbury Christ Church University.



Canterbury
Christ Church
University

Easy Sunday Special:

Turner's Tea Party

22 April

It's Turner's birthday on 23 April so we're having a huge party to celebrate! With a banquet bursting with mountainous jelly and inventive party food, it's an event not to be missed. Pick up a golden ticket at our Information Desk to attend the party.

Easy Holidays

1-4pm £2 per child (adults and under 3s free), just turn up.

Paint the elements

15 / 16 February

Try painting your own elemental scene.

Aniwalk

4 / 5 April

Be a part of our huge walking animation.

Sculpt Turner's World

11 / 12 April

Imagine you're in a Turner painting: sculpt what you might see; rocks, plants, explorers, elemental monsters...

Bookworms story time

18 Jan / 15 Feb / 21 Mar / 18 Apr / 16 May 11am - 12 midday

Join the monthly Turner Contemporary bookworms for a special story time, where we read aloud children's books related to the exhibitions. Aimed at children under 5 years and their parents.



Photo © Ady Kerry

Family explorer pack

£1 per use, available from Information Desk.

Become explorers with our resource packs full of activities for families, created by the Generate artists and their children.

Late Night Live

6-10pm free, just turn up

Once a month, enjoy an evening of entertainment as the gallery stays open late and transforms into a performance arena.

Elemental

24 February

Contemporary artists display how the effect of the elements has impacted on their work, including the world premiere of Matt Wright's *Wavetable* interactive installation.



Landmark

20 April

To celebrate Turner Contemporary's 1st birthday artists respond to the architecture of the gallery, plus exhibiting artist Hamish Fulton conducts a unique group walk. To take part in the walk email sangiama@turnercontemporary.org.

Book at turnercontemporary.org/whatson



Siobhan Davies, Songbook by Matteo Fargion, for ROTOR 2010 Photo Pari Naderi

Late Night Live Weekend Special... Siobhan Davies Dance

Siobhan Davies Dance presents live performances, sound and film works from *ROTOR*, an exhibition inspired by walking in a circle.

'ROTOR is exhilarating, offered with the finesse that always marks Davies' work. Stimulating and worthwhile'

Financial Times ★★★★★

Fri 30 Mar 6-10pm free

Sat 31 Mar-Sun 1 April

12 noon / 2pm / 4pm

£5 / £4 concessions

**SIOBHAN
DAVIES
DANCE** **ROTOR**

Special event: Contemporary Opera

10 May

In association with Sounds New and Canterbury Christ Church University, Turner Contemporary invites you to a special evening of contemporary opera with the world-premiere of *A Fury's Curses*.

Malédiction d'une furie (*A Fury's Curses*) with Mezzo- Soprano Lore Lixenberg 8pm

£10 / £8 concessions

Pioneering composer John Croft takes the French contemporary poet Jean Tardieu's play about the human condition to expressive extremes with voice, small ensemble, live electronics and electroacoustic sounds.

Lore Lixenberg (The Fury)
Richard Craig (bass and
contrabass flutes)
Rohan de Saram (cello)
Joby Burgess (percussion)

The performance lasts
approximately 50 minutes

Talk: **An Opera in the Making**

6pm **£5 / £4 concessions**

Before the live opera, you can hear composers John Croft and Emily Howard, and Mezzo-Soprano Lore Lixenberg discuss the challenges of creating and performing contemporary operatic work.

Special offers

Talk + Opera £12 /

£10 concessions

Opera + 3 Course Dinner £30

Book at turnercontemporary.org/whatson



Supported by
**ARTS COUNCIL
ENGLAND**

Talks

£5 / £4 concessions

Hamish Fulton in conversation with Erling Kagge
1 March 7pm

Exhibiting artist Hamish Fulton compares notes on walking with explorer Erling Kagge, the most acclaimed living polar explorer and the first to surmount the North and South Poles and Mount Everest.

Felicity Aston
19 April 6pm

Hear a first person account from Felicity Aston, on her recent attempt to be the first woman to cross the South Pole.

Janet Street-Porter
26 April 6pm wine reception,
6.30pm talk

£10 / £8 concessions
Talk + 3 Course Dinner £30
Journalist and TV presenter Janet Street-Porter shares her passion for rambling. Complimentary glass of wine with every ticket.

James Hamilton
3 May 6pm

Turner biographer and curator James Hamilton gives a lecture on how a passionate curiosity about nature underpins Turner's painting of land, sky and sea and examines how the painter's powers of observation found echo in scientific discovery.



Felicity Aston. Photo © Felicity Aston

Talk + Tea

3pm
£5 / £4 concessions
Join us for our regular afternoon talk and a cup of tea.

Inés Richter-Musso Co-Curator
Turner and the Elements

28 January
On the opening day of our first major show of JMW Turner's work, Inés gives an insight into the exhibition.

Lyndsey Morgan, Conservator
2 February

Former Conservator for Rodin's *The Kiss* Lyndsey Morgan discusses her up-close and personal relationship with the sculptor's masterpiece.

Dr Jan Piggott, Former Keeper of Archives Dulwich College

9 February
Former Head of English and Keeper of Archives at Dulwich College Dr Jan Piggott explores the topical context of Turner's *Hero of a Hundred Fights*, on show in our current exhibition, and the entertaining controversy of the unpopular *The Colossal Statue of Wellington* (formerly on the Arch at Hyde Park Corner).

Dr Karen Aplin, Director of Physics Teaching Laboratories University of Oxford

16 February
Dr Karen Aplin shares her recent research on the 'Meteorological Phenomena in Western Classical Orchestral Music', showcasing how the elements have influenced musicians from the time of Vivaldi to the present day.

Christine Riding, Senior Curator National Maritime Museum

23 February
Senior Curator of Paintings and Head of the Arts Department at the National Maritime Museum, Christine Riding, focuses on Turner's contribution to maritime painting, and the painter's fascination with the subject matter.

Book at turnercontemporary.org/whatson

Screen Sundays

2pm

£5 / £4 concessions

Book at turnercontemporary.org/whatson

Artist's Choice: Hamish Fulton

The Sun Behind the Clouds:

Tibet's Struggle for Freedom

2010 Dir. Ritu Sarin and Tenzing Sonam

29 January

Fifty years after the fall of Tibet, can the Dalai Lama make a breakthrough in his efforts to find a solution to the Tibet question?

Touching the Void

2003 (15) Dir. Kevin Macdonald

26 February

The true story of two climbers and their terrifying journey up the west face of Siula Grande in the Peruvian Andes in 1985.

Fitzcarraldo

1982 (PG) Dir. Werner Herzog

25 March

Brian Sweeney Fitzgerald is determined to build an opera house in the middle of a jungle. But he has to pull a steamship over a steep hill in order to access a rich rubber territory.

Man on Wire

2008 (12) Dir. James Marsh

29 April

Documentary of tightrope walker Philippe Petit's daring, illegal, high-wire routine between New York City's World Trade Center's twin towers in 1974.

Craft Club

28 Jan / 25 Feb / 31 Mar /

28 Apr

1-4pm free

Learn how to knit with coloured wool inspired by Turner's paintings and more at this monthly club, run by craft enthusiasts. Beginners welcome.



Photo © Claire Healy

Workshops

Saturday Studio

Every week*

1-4pm children free

£2 per adult, just turn up

Designed for everyone to take part, these creative workshops alternate between two fun activities.

*except 28 Jan / 25 Feb / 31 Mar / 28 Apr

Explorer's journal

21 Jan / 4, 18 Feb / 3, 17 Mar /

14 Apr / 12 May

Make your own expedition keepsake to draw, write and scribble onto in and out of these sessions.

Colour Lab

11 Feb / 10, 24 Mar /

7, 21 Apr / 5 May

Mix your own paints with pigments inspired by Turner's palette, then paint your own elemental scene.

Deaf Awareness Day

12 May

As part of Deaf Awareness Week, artist Christopher Sacre gives a guided tour of the exhibition and runs our Saturday Studio workshop in British Sign Language.



Saturday Studio. Photo © Turner Contemporary

Seascape oil painting

25 February

10am-4pm

£50 / £40 concessions

Book online at

www.kentadulteducation.co.uk

code AY054 MAR-11-C

Learn how to create a seascape using oil paints with award winning artist Sarah Spencer. In partnership with Kent Adult Education.

**KENTADULT
EDUCATION**

Life Drawing with Roy Eastland

20, 27 March / 3 April

3-5pm / 6-8pm 18 years+

£7 / £6 concessions per session

Artist Roy Eastland gives life drawing lessons. Beginners welcome. All materials included except easels.



Watercolour and the Elements

31 March 10am-4pm

£50 / £40 concessions

Book online at

www.kentadulteducation.co.uk

code AY054 MAR-11-D

Learn how to use watercolours to depict the elements with Royal Society artist Charles Williams. In partnership with Kent Adult Education.

**KENTADULT
EDUCATION**

Artists' Salon

22 Feb / 21 Mar / 18 Apr / 23 May

3pm free

Join our peer-to-peer artwork critique session. Email sangiama@turnercontemporary.org to take part.

Book at turnercontemporary.org/whatson

Schools and groups

Our Learning Programme, *We Are Curious*, has been inspired by the curiosity of artists to help your school or community group use exhibitions as a starting point to develop creative questioning and thinking, build confidence and communication skills and have great fun.

Visit turnercontemporary.org/learn for details or call 01843 233000.

Community

We aim to make art accessible and relevant to all members of our community through engaging projects.

To find out how you can participate visit turnercontemporary.org/learn

Inspiring Learning Education Evening

1 February 6-8pm

Find out about our Learning Programme, meet the team, tour the gallery and our current exhibitions. For teachers, youth and community leaders.



Photo © Ady Kerry



Auguste Rodin, *The Kiss*, 1901–4. Tate, London 2011
(installation view at Turner Contemporary). Photo © Brian Moody

Rodin's *The Kiss*

Rodin's iconic sculpture, on loan from the Tate Collection, is on display in our Sunley Gallery. The life-size embracing couple come from a true thirteenth century story of forbidden love, which was immortalised in Dante's *Inferno* and by many artists since. It is only the third time that this beautiful work has been shown outside of London, and can now be seen with the backdrop of stunning sea views.

Share your moments with Rodin's *The Kiss* on our Flickr photo pool at www.flickr.com/groups/rodinkiss.

Support us

Turner Contemporary is a charity which relies on generous donations to build upon and sustain our work.

To make a donation and to find out more, email Lhosa Daly at ldaly@turnercontemporary.org or visit turnercontemporary.org/support.

Café

Open Tuesday to Sunday for delicious modern seasonal cuisine. Dinner service Friday and Saturday evenings.

Hire

With stunning galleries and public spaces, breathtaking sea views and state-of-the-art facilities, Turner Contemporary is the most extraordinary venue for hire in the South East. To book your wedding, private or corporate event, please call 01843 233000 or email hire@turnercontemporary.org / weddings@turnercontemporary.org

Shop

Find a wide range of gifts, contemporary design products, jewellery, exhibition catalogues and books in our shop.

A new **limited edition print** by Stephen Hughes, commissioned during the construction of Turner Contemporary, is available price £80. An exhibition of Stephen's commissioned works are on display in our Café until 25 March.



Stephen Hughes, *Margate*, 2010

Future exhibitions

She Lay Down Deep Beneath the Sea:
Tracey Emin at Turner Contemporary
26 May – 23 September 2012

Free admission



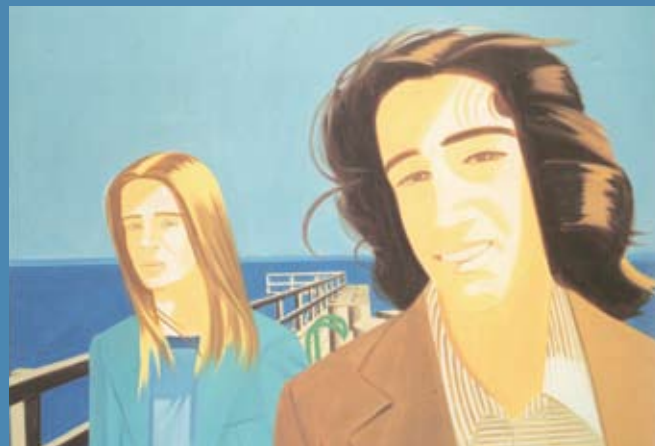
Tracey Emin, *Sex 1 25-11-07 Sydney* © Tracey Emin/Tracey Emin studio

Tracey Emin's first major solo exhibition at Turner Contemporary is conceived specially for Margate, where Emin grew up and which has provided inspiration for many of her most famous art works. The exhibition explores the themes of love, sensuality and romanticism in Emin's oeuvre, featuring both new and existing works including drawings, monoprints, sculptures and neons.

Alex Katz: Give Me Tomorrow
6 October 2012 – 13 January 2013

Alex Katz: On the Tate Collection
6 October 2012 – 20 January 2013

Free admission



Alex Katz, *Ilsebro Ferry Slip, 1976* © Tate, London 2011

Alex Katz is one of the most important and respected living American artists. In this exhibition, Katz brings together over 30 canvases, plus collages and cut-outs, that span the full breadth of his career from the 1950s to now. To accompany the show, Katz has made a personal selection of works from the Tate Collection.

Visit

Turner Contemporary

Rendezvous,
Margate, Kent CT9 1HG
Tel: + 44 (0)1843 233000
info@turnercontemporary.org
turnercontemporary.org

Opening times

Tuesday – Sunday
(plus bank holidays)
10am – 6pm
Open to 10pm one Friday
every month for Late
Night Live.

Access

The gallery is fully
accessible for
visitors, please go to
turnercontemporary.org/
visit or contact us for
details.

How to get here

Go to
turnercontemporary.org/visit
for full details.

Please note: Flood defence works in
progress along Margate Harbour Arm,
the Parade and Marine Drive.

Your turn

Share your experience
at Turner Contemporary
by joining our online
community:
Follow our Curator's blog
at turnercontemporary.org/blog
Tweet us @TCMargate
#Turner / #HamishFulton
[Facebook.com/turnercontemporary](https://www.facebook.com/turnercontemporary)

For the latest Turner
Contemporary news,
exclusive events and
offers, join our mailing list
at turnercontemporary.org/mailling-list.

*'The site is spectacular...
the subtle play of light,
sky and sea inside and
outside is exhilarating,
even euphoric.'*

Burlington magazine

*'Turner Contemporary is
the most exciting thing to
happen in East Kent since
I first moved to this area in
the mid-seventies. I never
imagined that my family
and grandchildren would
have the opportunity to
walk into a local gallery to
view world-class art.'*

Peter Medwell, Thanet
resident

All information and event listings correct
at time of going to press.

Recycled paper

Turner Contemporary is a registered
charity No. 1129974

Supported by:



Supported by
**ARTS COUNCIL
ENGLAND**

The Henry Moore
Foundation



Cover image:

JMW Turner, *The New Moon* or, *'I've Lost
My Boat, You Shan't Have Your Hoop'*,
exhibited 1840 © Tate, London 2011

Collaborators:

BUGERIUS
KUNST
FORUM

mnk
MUSEUM
NORTH KENT

IKON



Media partners:

sky ARTS

INDEPENDENT